

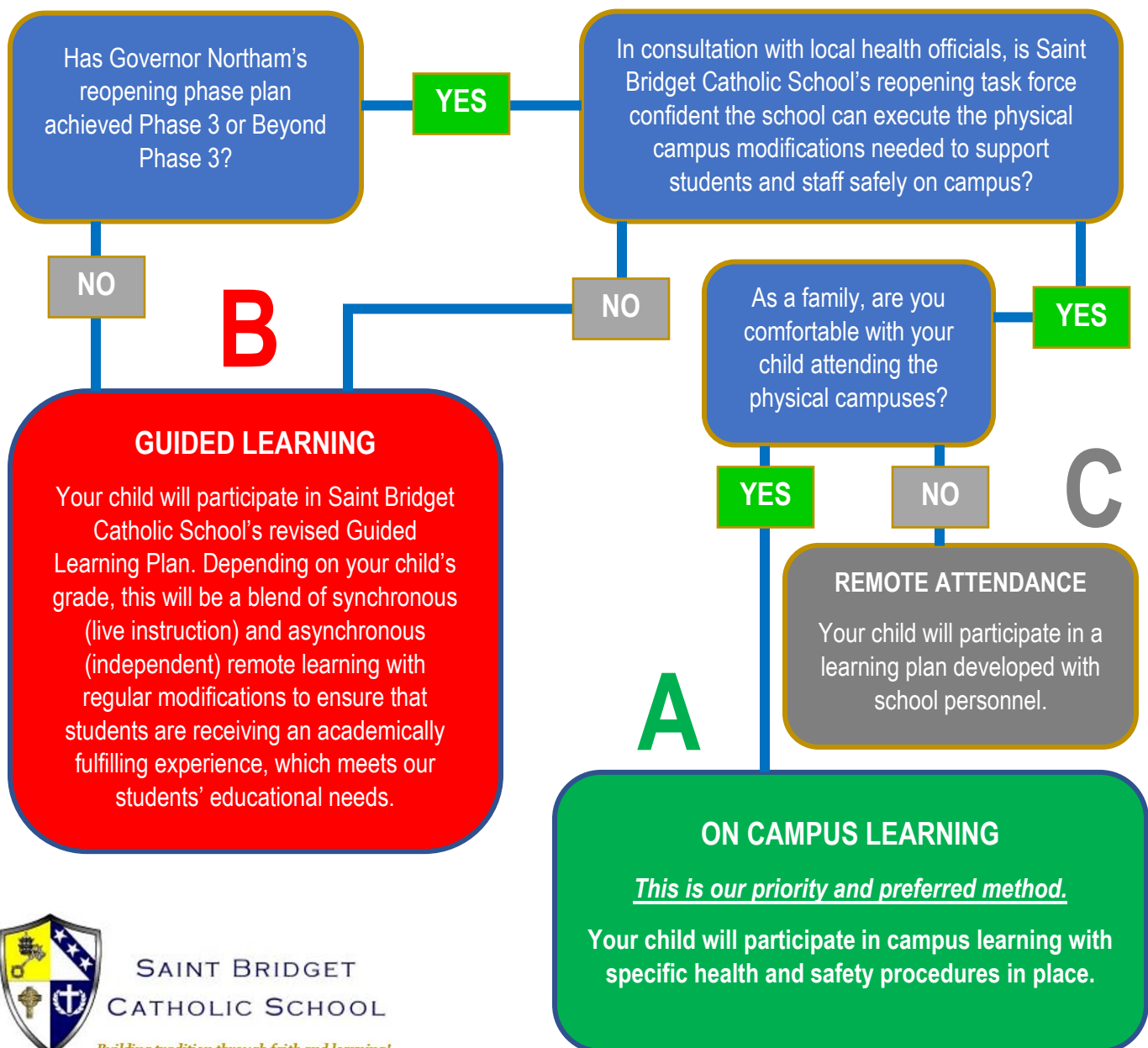
SAINT BRIDGET CATHOLIC SCHOOL

Building tradition through faith and learning!

Reopening Plan Overview 2020-2021

Reopening Planning

Saint Bridget Catholic School has established a reopening task force which is working diligently to develop a reopening strategy that allows for flexibility, transparency and maintains the health and safety of our community. **Saint Bridget Catholic School is currently preparing the physical campuses to support students in the fall of 2020.** This is our priority and our preferred method of instruction. However, we are also aware there may be moments in the year where our local, regional or national officials may recommend or require our campuses to be closed, or families may be concerned for their children’s health. Therefore, this decision tree offers guidance in determining how students will learn:



SAINT BRIDGET
CATHOLIC SCHOOL

Building tradition through faith and learning!

ON CAMPUS LEARNING

Scenario A

This is our priority and preferred method. Saint Bridget Catholic School is preparing for on campus school operations to resume in the fall of 2020. The community will follow specific health precautions which will be in accordance with local, state, and federal requirements. Specific decisions and plans regarding on campus modifications will be finalized over the next several weeks, however current considerations can be found on page 6 of this reopening plan.



The school start and end times will *likely* remain the same and the official school calendar will *likely* be followed.



Athletic offerings will be determined by recommendations and requirements from the local health department.



Health screenings and increased sanitizing, cleaning, and disinfecting processes will be implemented.



Procedures concerning staff and student illnesses will be strictly maintained.

Preparing for Interruptions

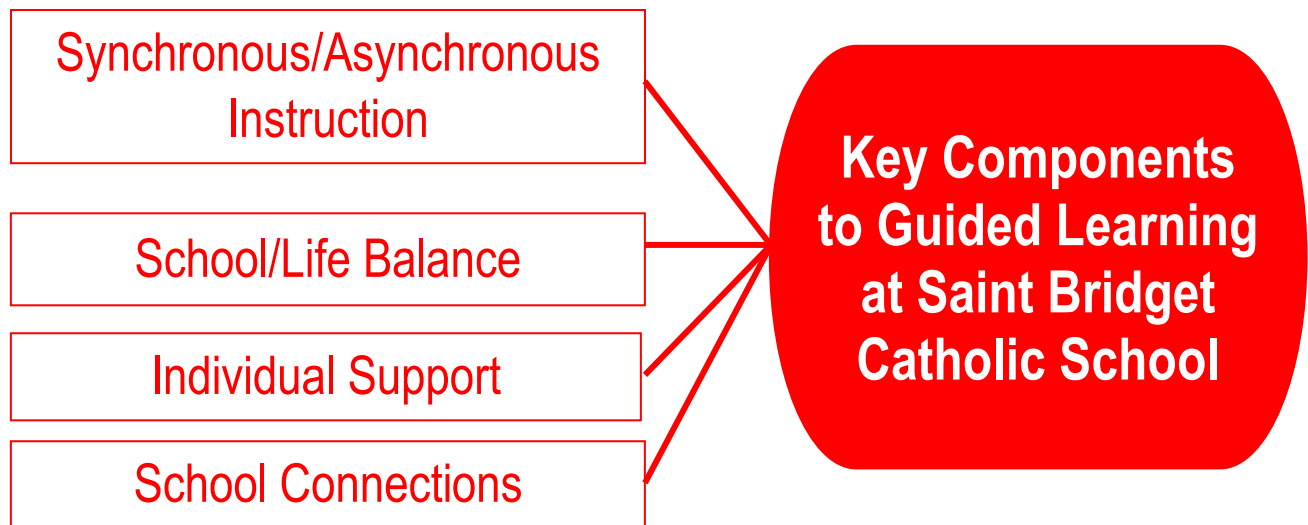
Following the recommendation from our Reopening Task Force and trends from past pandemics, Saint Bridget Catholic School is preparing for waves of interruption to on campus learning. If an interruption of physical operations is required, a shift to Guided Learning will happen.

GUIDED LEARNING

Scenario B

If in Phase 2, students in JK-3rd grade continue with on campus, in-person instruction while students in grades 4-8 will move to our revised Guided Learning Plan. If in Phase 1 or 0 all students, regardless of grade, will move to our revised Guided Learning Plan. These scenarios do not change our mission of providing a strong academic curriculum.

In the revised Guided Learning model, we continue to educate the whole child, build confidence, promote life balance, and encourage the pursuit of individual passions. Saint Bridget Catholic School's Guided Learning model blends daily synchronous (live) and asynchronous (independent) instruction in a schedule intentionally designed to provide school/life balance and mindfulness.



Flexibility and Personalization



Saint Bridget Catholic School recognizes that the revised Guided Learning experience will be different for every student depending on their learning needs. School leadership will work individually with families to determine adjustments in schedules, workloads, and expectations.

REMOTE ATTENDANCE

Scenario C

Students may find themselves in a situation, during the year, where Saint Bridget Catholic School's campuses are open, but they are not able to physically attend school. In these situations, Saint Bridget Catholic School will work with families to develop a Learning Plan that supports the student's continued academic growth. Students will have access to course materials electronically and will benefit from virtual daily support and assistance.

Instances for Remote Attendance

Family is not comfortable sending student to school.

Student is sick and unable to attend in person but is well enough to participate in class virtually.

Student is in self-quarantine for potential exposure to COVID-19.



Students will be marked as Present from home. Any day in the Remote Attendance model will be counted as a day present.



Flexibility and Personalization will also be used during Remote Attendance to ensure the most important academic pursuits are prioritized, while assisting students with needs and promoting school/life balance.

Physical Campus

While specific decisions and plans will be finalized over the next several weeks as more information and updated public health guidelines are issued, strategies are being developed in the following areas including, but not limited to:



Requirements for temperatures to be taken for students, faculty, staff, visitors and vendors



The use of face coverings by adults during instruction and in public gathering spaces when social distance cannot be maintained



Institution of capacity limits to allow for social distancing in classrooms and public spaces such as the Cafeteria, MPH, church, PAC, etc.



Sanitizing and cleaning processes



Modification of programs and events in compliance with limits on gathering sizes and social distancing measures



Changes to campus access for parents, visitors, and volunteers



Continued use of in-person services in conjunction with online and virtual platforms (a “hybrid” approach”) **when needed** to keep in-person contact at the safest level in the areas of academic instruction, student activities, and more.

A comprehensive reopening plan is currently being developed. This plan will be communicated to families as soon as it is finalized and prior to the reopening of school in mid-August. Additionally, the school will host a Parent Academy to detail the plan and address questions and concerns the week of August 17, 2020.



SAINT BRIDGET
CATHOLIC SCHOOL

Building tradition through faith and learning!